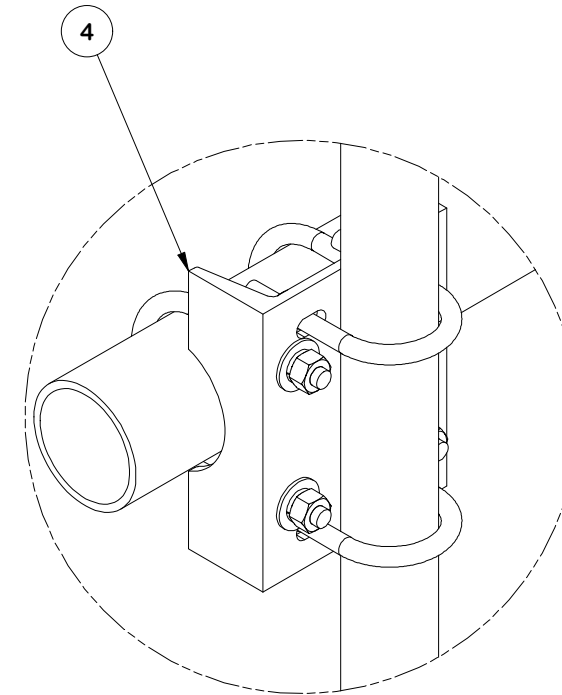
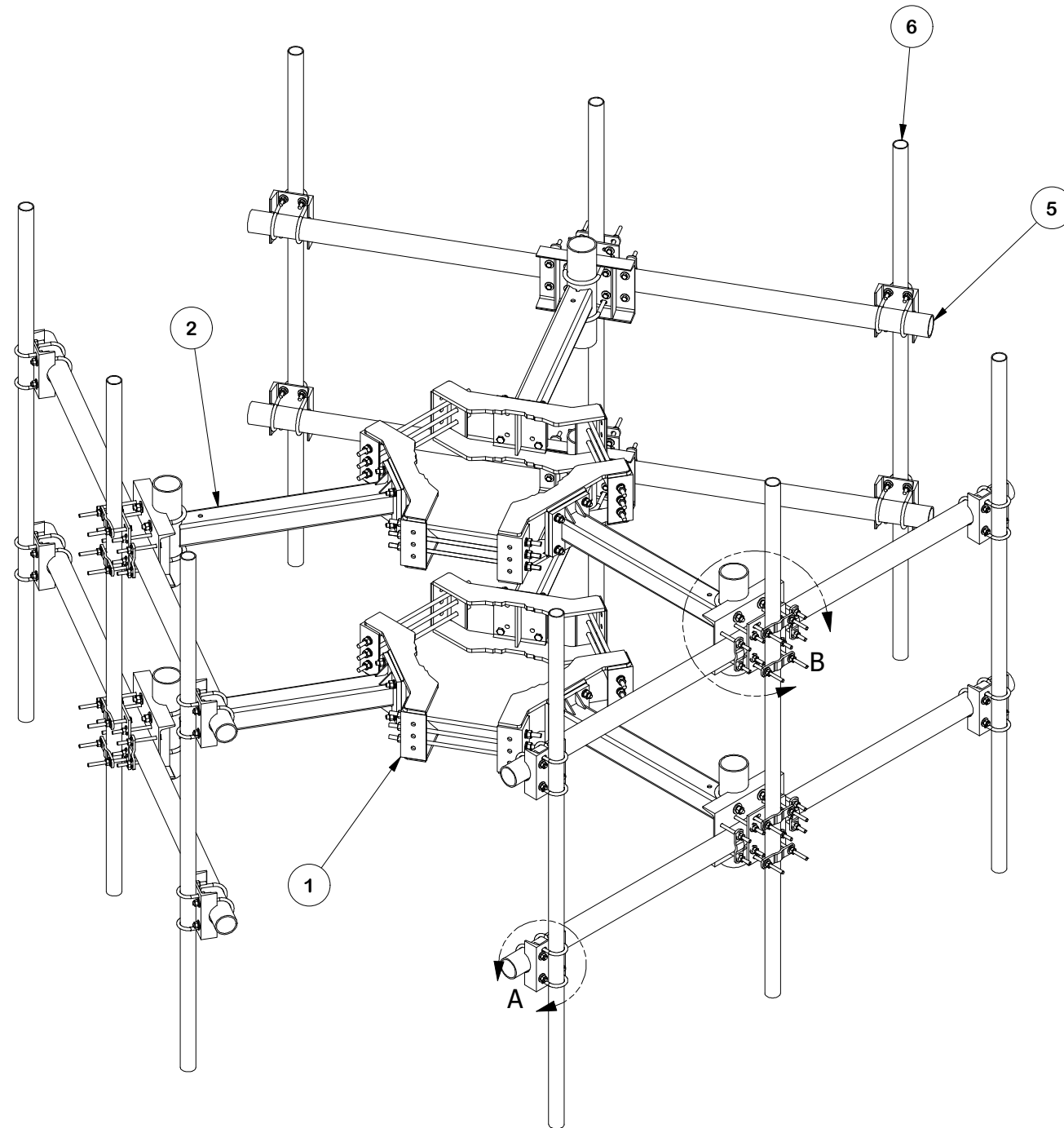
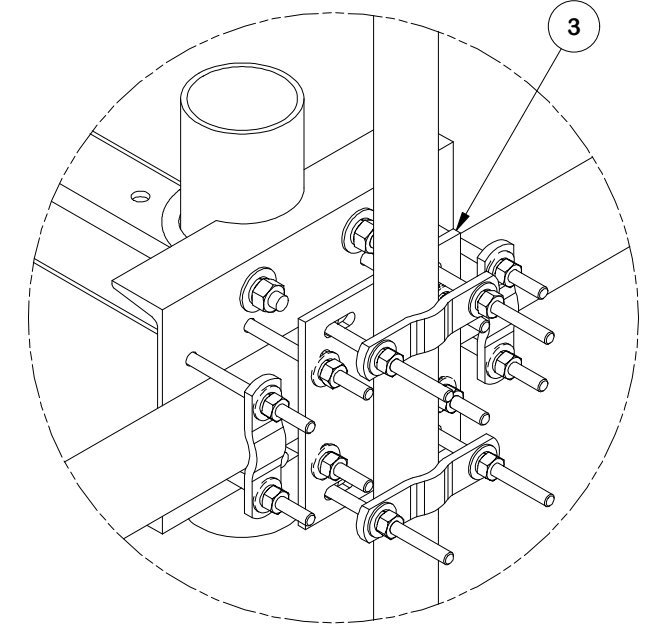


PARTS LIST									
ITEM	QTY	PART NO.	BOX NO.	PART DESCRIPTION	LENGTH	UNIT WT.	NET WT.		
1	2	LWRM		UNIVERSAL RING MOUNT		266.93	533.87		
2	6	SV197-36		36" SUPPORT ARM KIT		70.12	420.71		
3	6	SP216-CK		PIPE SUPPORT CROSS PLATE CENTER KIT		47.47	284.83		
4	12	SP219	P-SP219	PIPE MOUNT CROSSOVER KIT		12.55	150.57		
5	6	P3108		3" SCH. 40 PIPE (3.5" O.D. X 0.226" - A53 GR. B Fy=35 ksi min)	108.000 in	71.76	430.56		
6	9	P296		2" SCH. 40 PIPE (2.375" O.D. X 0.154" - A53 GR. B Fy=35 ksi min)	96 in	32.60	293.42		
						TOTAL WT. #	2113.95		



DETAIL A



DETAIL B

FINISH:
HOT DIP GALVANIZED.

TOLERANCE NOTES

TOLERANCES ON DIMENSIONS, UNLESS OTHERWISE NOTED ARE:
 SAWED, SHEARED AND GAS CUT EDGES ($\pm 0.030"$)
 DRILLED AND GAS CUT HOLES ($\pm 0.030"$) - NO CONING OF HOLES
 LASER CUT EDGES AND HOLES ($\pm 0.010"$) - NO CONING OF HOLES
 BENDS ARE $\pm 1/2$ DEGREE
 ALL OTHER MACHINING ($\pm 0.030"$)
 ALL OTHER ASSEMBLY ($\pm 0.060"$)

PROPRIETARY NOTE:
 THE DATA AND TECHNIQUES CONTAINED IN THIS DRAWING ARE PROPRIETARY INFORMATION OF VALMONT INDUSTRIES AND CONSIDERED A TRADE SECRET. ANY USE OR DISCLOSURE WITHOUT THE CONSENT OF VALMONT INDUSTRIES IS STRICTLY PROHIBITED.

DESCRIPTION
**8' DOUBLE MONOPOLE
 TRIPLE T-ARM 12"-45"
 W/ 2-3/8" ANTENNA PIPES**

SITE PRO 1
 A valmont COMPANY

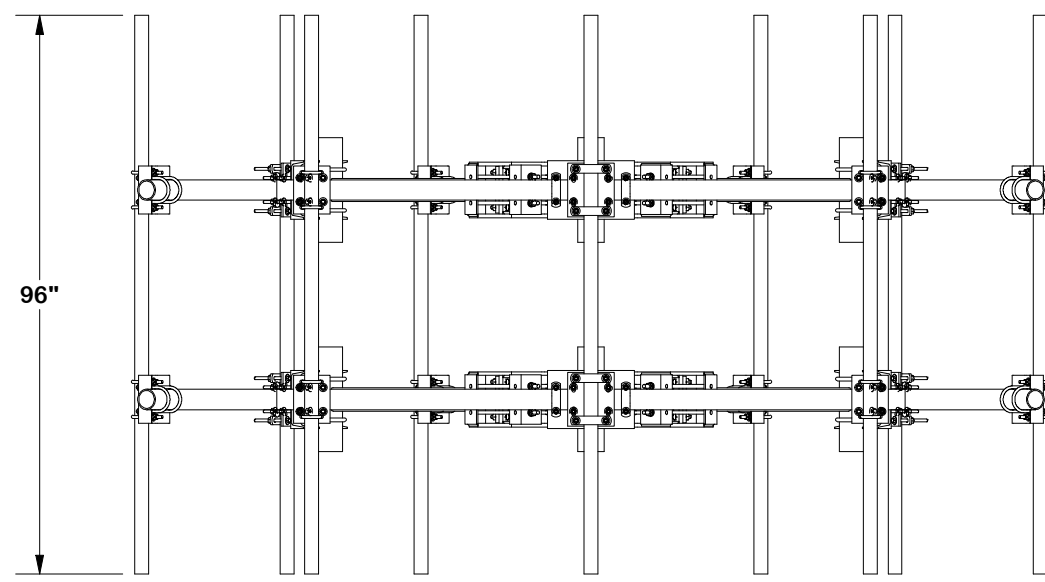
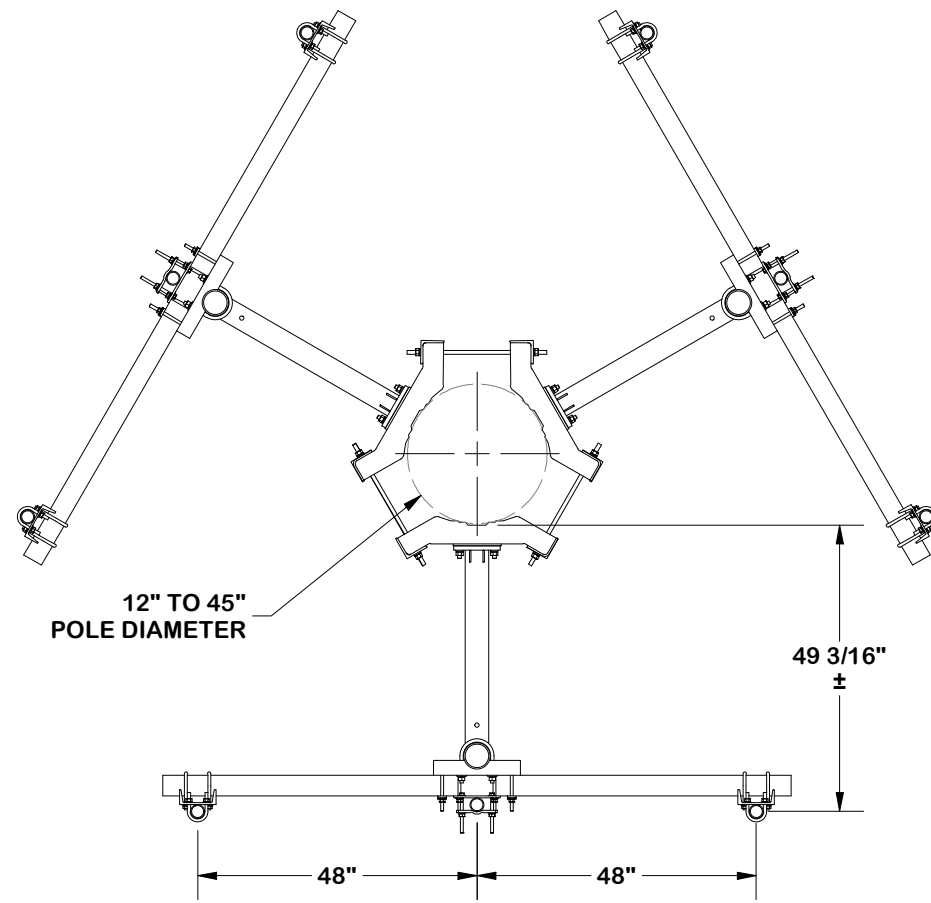
Engineering Support Team:
 1-888-753-7446

Locations:
 New York, NY
 Atlanta, GA
 Los Angeles, CA
 Plymouth, IN
 Salem, OR
 Dallas, TX

REV	DESCRIPTION OF REVISIONS	CPD	BY	DATE
B	SUPER ASSEMBLY AND CHANGED PIPE P396 TO P3108	NCS	KS	5/5/2026
A	CHANGED CENTER MOUNT PIPE CONNECTION	N/A	CSL	11/23/2021

CPD NO.	DRAWN BY	ENG. APPROVAL
NCS	CMFL 11/1/2021	5/7/2026
CLASS	DRAWING USAGE	CHECKED BY
87	CUSTOMER	JET 5/7/2026

PART NO.	DWG. NO.
RMVD8-3-296	RMVD8-3-296



TOLERANCE NOTES

TOLERANCES ON DIMENSIONS, UNLESS OTHERWISE NOTED ARE:
 SAWED, SHEARED AND GAS CUT EDGES (± 0.030 ")
 DRILLED AND GAS CUT HOLES (± 0.030 ") - NO CONING OF HOLES
 LASER CUT EDGES AND HOLES (± 0.010 ") - NO CONING OF HOLES
 BENDS ARE $\pm 1/2$ DEGREE
 ALL OTHER MACHINING (± 0.030 ")
 ALL OTHER ASSEMBLY (± 0.060 ")

PROPRIETARY NOTE:
 THE DATA AND TECHNIQUES CONTAINED IN THIS DRAWING ARE PROPRIETARY INFORMATION OF VALMONT INDUSTRIES AND CONSIDERED A TRADE SECRET. ANY USE OR DISCLOSURE WITHOUT THE CONSENT OF VALMONT INDUSTRIES IS STRICTLY PROHIBITED.

DESCRIPTION
**8' DOUBLE MONOPOLE
 TRIPLE T-ARM 12"-45"
 W/ 2-3/8" ANTENNA PIPES**

CPD NO. NCS	DRAWN BY CMFL 11/1/2021	ENG. APPROVAL 5/7/2026
CLASS 87	SUB 02	DRAWING USAGE CUSTOMER
	CHECKED BY JET	5/7/2026



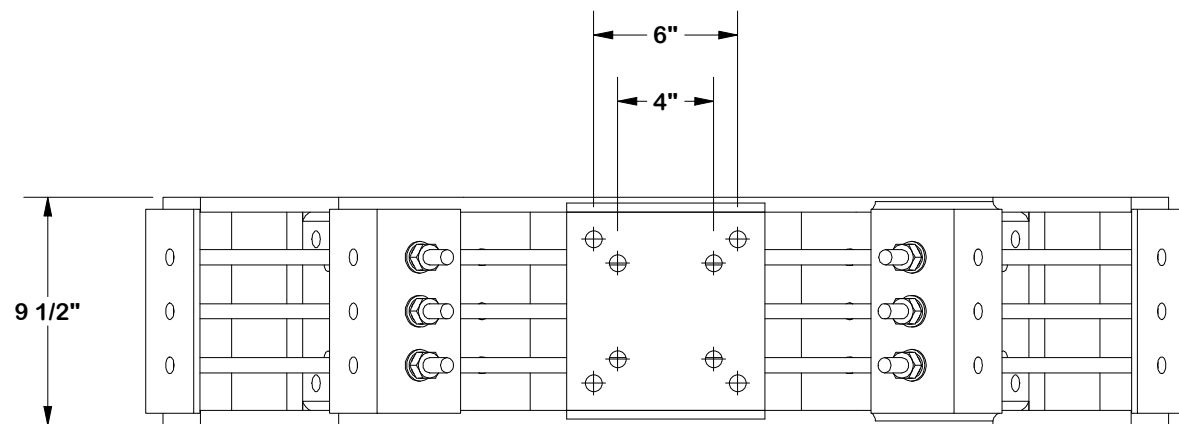
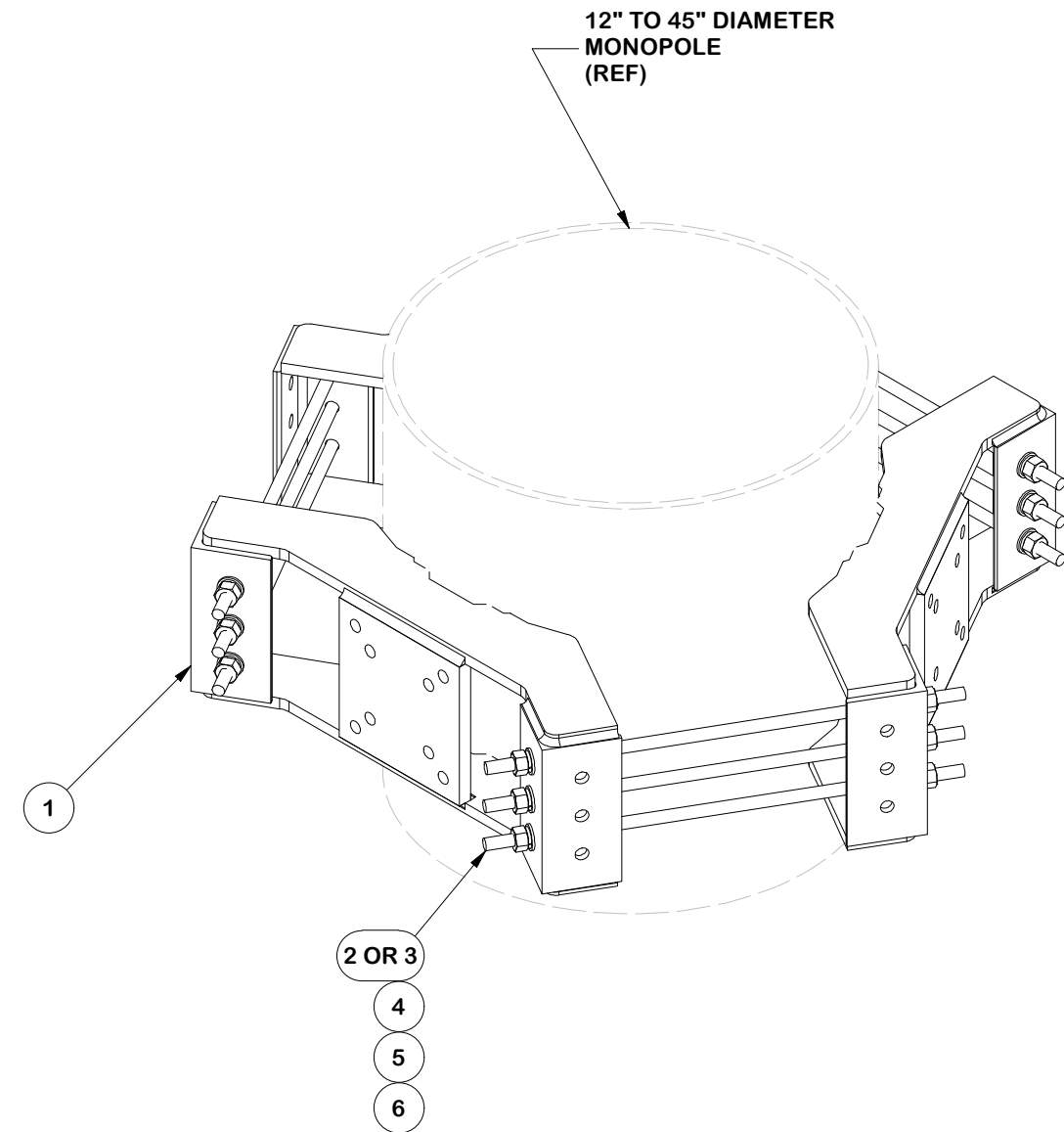
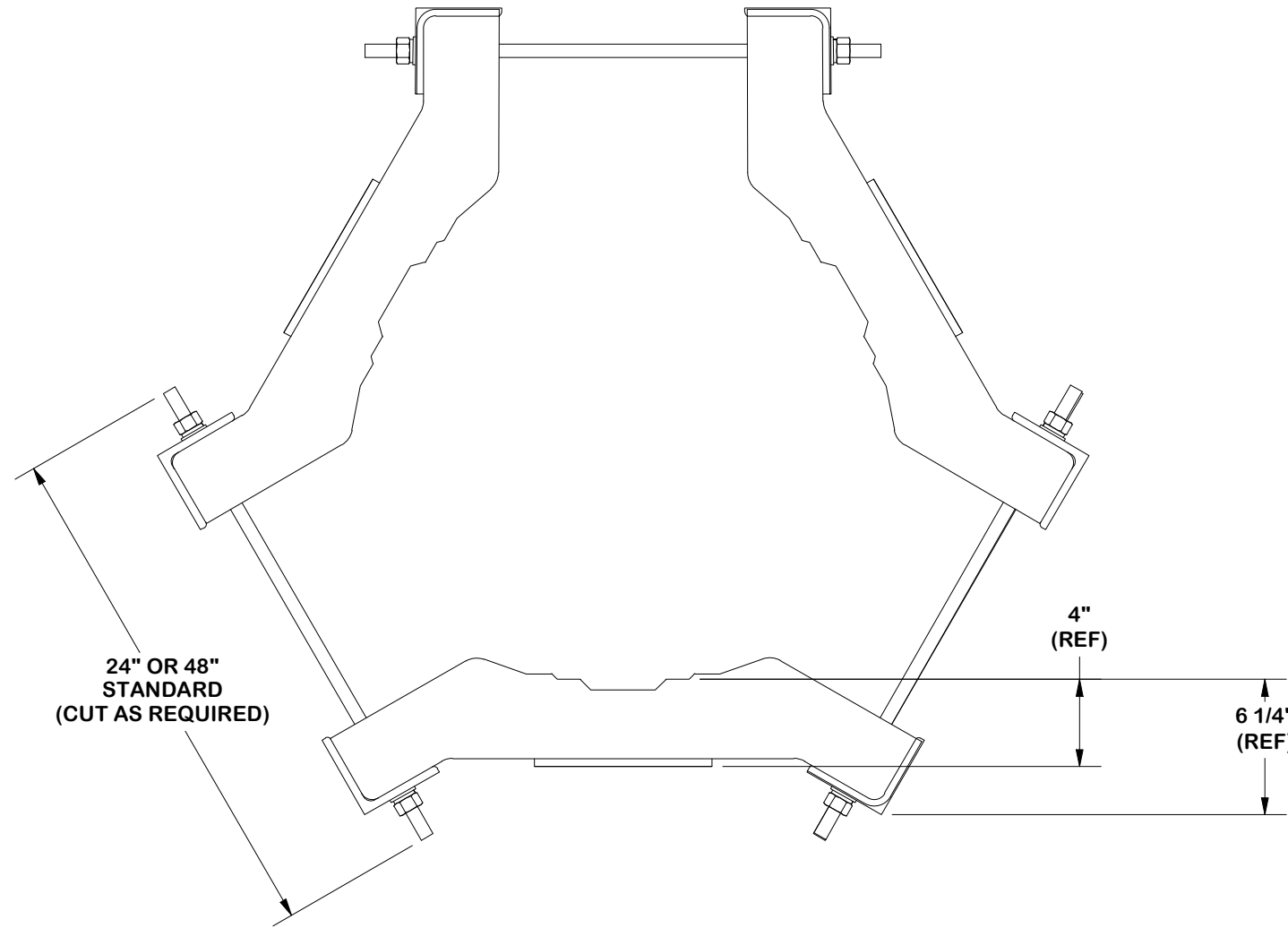
A **valmont** COMPANY

Locations:
 New York, NY
 Atlanta, GA
 Los Angeles, CA
 Plymouth, IN
 Salem, OR
 Dallas, TX

Engineering
 Support Team:
 1-888-753-7446

PART NO. RMVD8-3-296	2 OF 9 PAGE
DWG. NO. RMVD8-3-296	

PARTS LIST						
ITEM	QTY	PART NO.	PART DESCRIPTION	LENGTH	UNIT WT.	NET WT.
1	3	X-LWRM	RING MOUNT WELDMENT		69.02	207.06
2	9	G58R-48	5/8" x 48" THREADED ROD (HDG.)		4.18	37.63
3	9	G58R-24	5/8" x 24" THREADED ROD (HDG.)		2.09	18.82
4	18	A58FW	5/8" HDG A325 FLATWASHER		0.03	0.61
5	18	G58LW	5/8" HDG LOCKWASHER		0.03	0.47
6	18	A58NUT	5/8" HDG A325 HEX NUT		0.13	2.34
TOTAL WT. #						266.93



FINISH:
HOT DIP GALVANIZED.

TOLERANCE NOTES

TOLERANCES ON DIMENSIONS, UNLESS OTHERWISE NOTED ARE:
 SAWED, SHEARED AND GAS CUT EDGES ($\pm 0.030"$)
 DRILLED AND GAS CUT HOLES ($\pm 0.030"$) - NO CONING OF HOLES
 LASER CUT EDGES AND HOLES ($\pm 0.010"$) - NO CONING OF HOLES
 BENDS ARE $\pm 1/2$ DEGREE
 ALL OTHER MACHINING ($\pm 0.030"$)
 ALL OTHER ASSEMBLY ($\pm 0.060"$)

PROPRIETARY NOTE:
 THE DATA AND TECHNIQUES CONTAINED IN THIS DRAWING ARE PROPRIETARY INFORMATION OF VALMONT INDUSTRIES AND CONSIDERED A TRADE SECRET. ANY USE OR DISCLOSURE WITHOUT THE CONSENT OF VALMONT INDUSTRIES IS STRICTLY PROHIBITED.

DESCRIPTION
**8' DOUBLE MONOPOLE
 TRIPLE T-ARM 12"-45"
 W/ 2-3/8" ANTENNA PIPES**

SITE PRO 1
 A valmont COMPANY
 Engineering Support Team:
 1-888-753-7446
 Locations:
 New York, NY
 Atlanta, GA
 Los Angeles, CA
 Plymouth, IN
 Salem, OR
 Dallas, TX

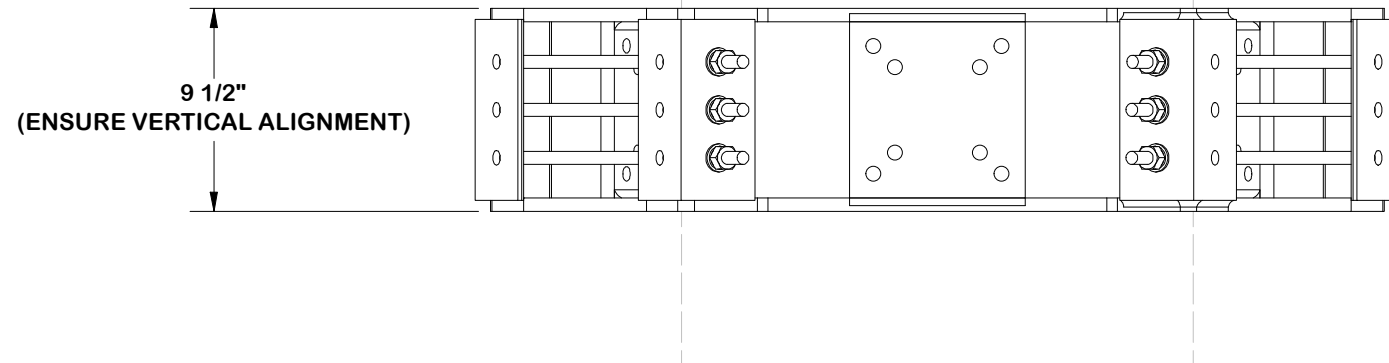
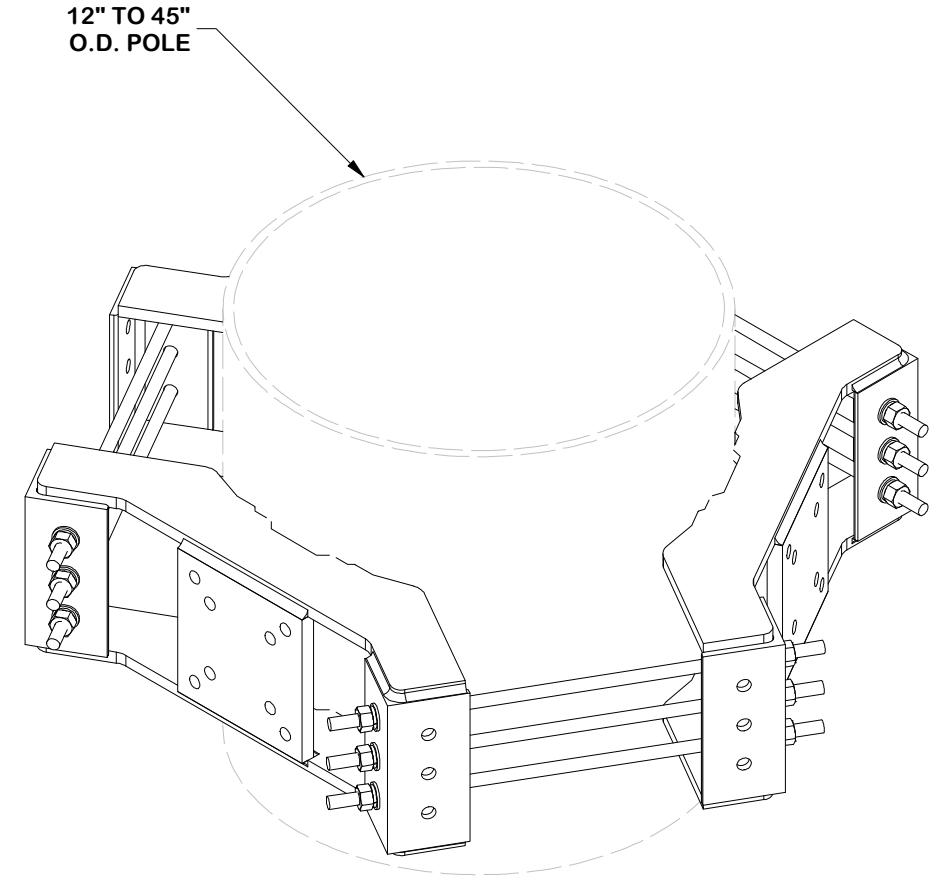
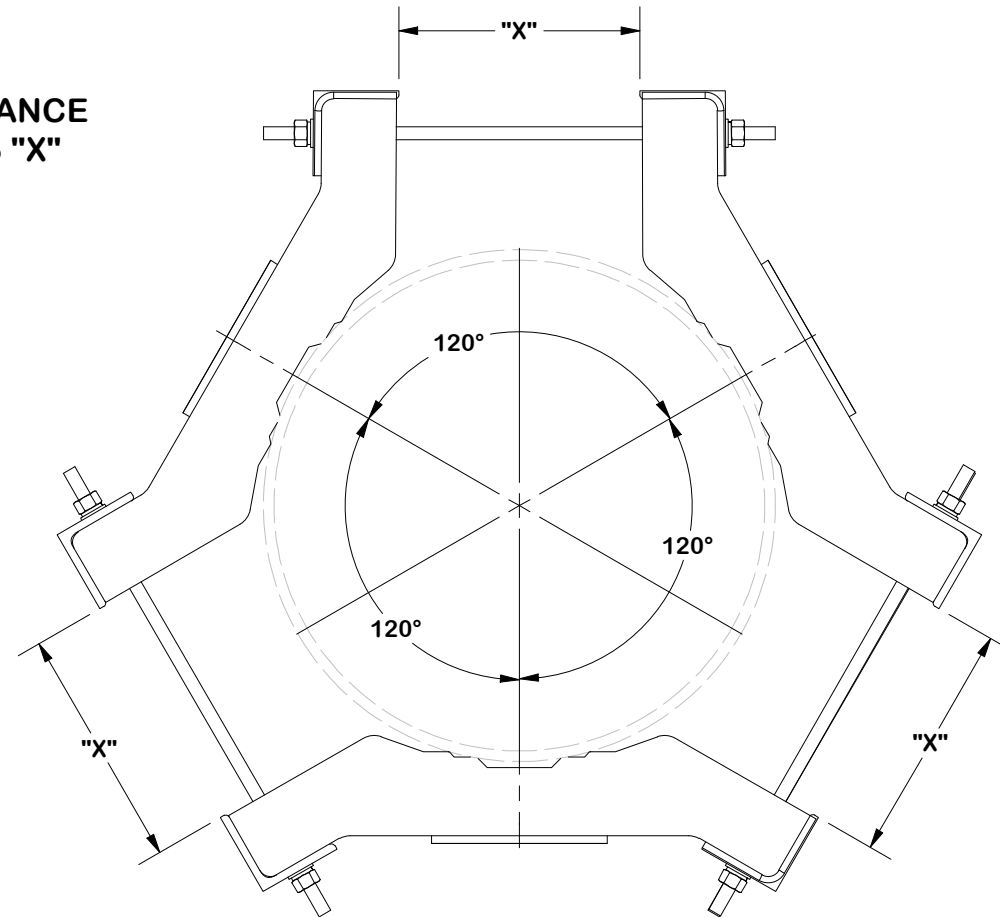
REV	DESCRIPTION OF REVISIONS	CPD	BY	DATE
C	REVISED PAGES CORRECTED	NCS	SDR	5/5/2026
B	UPDATED TEMPLATE	SP1	CSL	9/5/2024
A	REDRAWN IN INV, UPDATED TABLES AND VIEW	SP1	KC8	7/25/2012

CPD NO. NCS	DRAWN BY CMFL 11/1/2021	ENG. APPROVAL 5/7/2026
CLASS 87	SUB 02	DRAWING USAGE CUSTOMER
CHECKED BY JET 5/7/2026		

PART NO. LWRM	DWG. NO. RMVD8-3-296
-------------------------	--------------------------------

NOTE:

ENSURE EQUAL DISTANCE BETWEEN BRACKETS "X" AND AT 120° APART



TOLERANCE NOTES

TOLERANCES ON DIMENSIONS, UNLESS OTHERWISE NOTED ARE:
 SAWED, SHEARED AND GAS CUT EDGES (± 0.030 ")
 DRILLED AND GAS CUT HOLES (± 0.030 ") - NO CONING OF HOLES
 LASER CUT EDGES AND HOLES (± 0.010 ") - NO CONING OF HOLES
 BENDS ARE $\pm 1/2$ DEGREE
 ALL OTHER MACHINING (± 0.030 ")
 ALL OTHER ASSEMBLY (± 0.060 ")

PROPRIETARY NOTE:
 THE DATA AND TECHNIQUES CONTAINED IN THIS DRAWING ARE PROPRIETARY INFORMATION OF VALMONT INDUSTRIES AND CONSIDERED A TRADE SECRET. ANY USE OR DISCLOSURE WITHOUT THE CONSENT OF VALMONT INDUSTRIES IS STRICTLY PROHIBITED.

DESCRIPTION
**8' DOUBLE MONOPOLE
 TRIPLE T-ARM 12"-45"
 W/ 2-3/8" ANTENNA PIPES**

CPD NO. NCS	DRAWN BY CMFL 11/1/2021	ENG. APPROVAL 5/7/2026
CLASS 87	SUB 02	DRAWING USAGE CUSTOMER
	CHECKED BY JET	5/7/2026



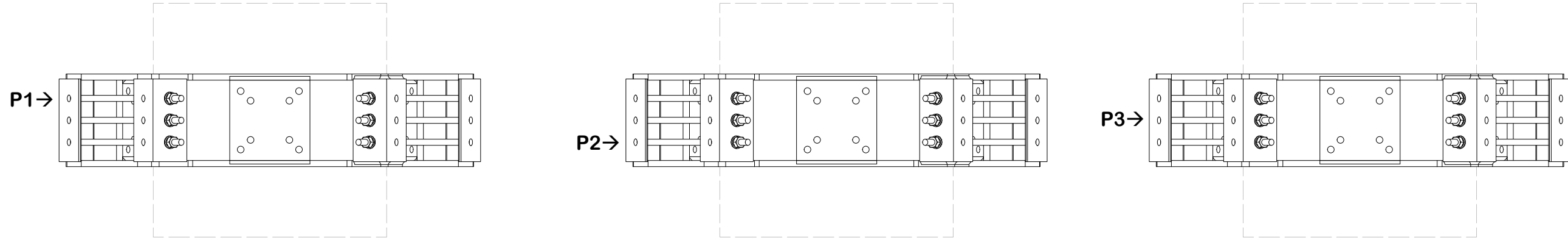
A **valmont** COMPANY

Locations:
 New York, NY
 Atlanta, GA
 Los Angeles, CA
 Plymouth, IN
 Salem, OR
 Dallas, TX

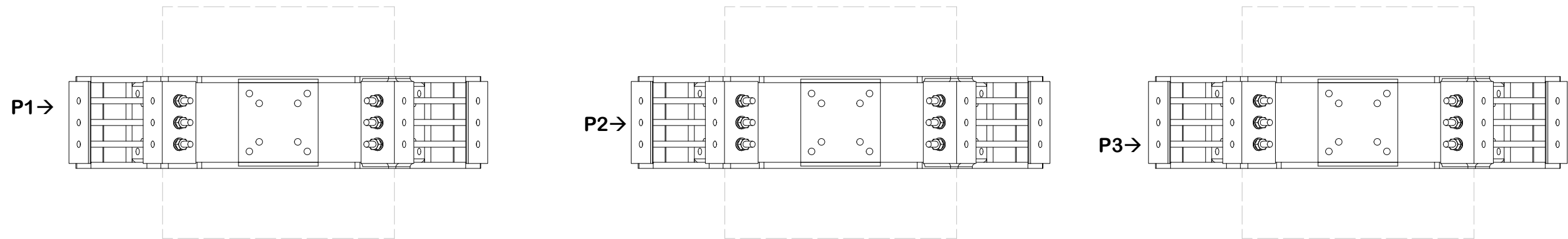
Engineering Support Team:
 1-888-753-7446

PART NO. LWRM	4 OF 9 PAGE
DWG. NO. RMVD8-3-296	

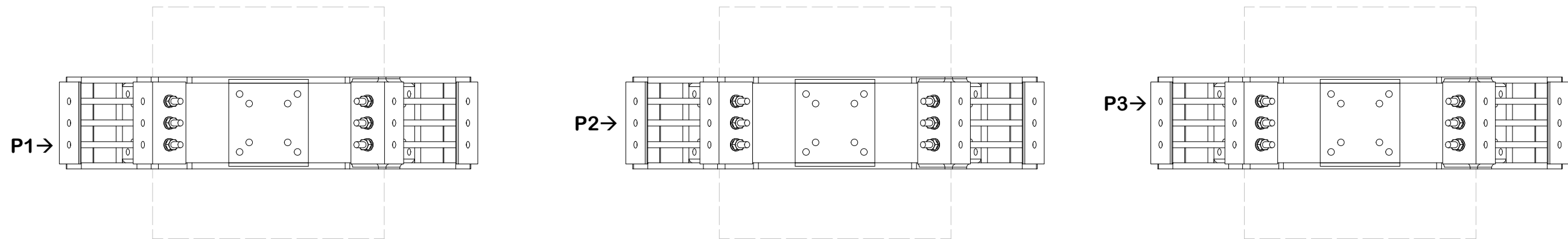
INSTALL ORDER



INITIAL TIGHTENING



FINAL TIGHTENING



TOLERANCE NOTES

TOLERANCES ON DIMENSIONS, UNLESS OTHERWISE NOTED ARE:
 SAWED, SHEARED AND GAS CUT EDGES ($\pm 0.030"$)
 DRILLED AND GAS CUT HOLES ($\pm 0.030"$) - NO CONING OF HOLES
 LASER CUT EDGES AND HOLES ($\pm 0.010"$) - NO CONING OF HOLES
 BENDS ARE $\pm 1/2$ DEGREE
 ALL OTHER MACHINING ($\pm 0.030"$)
 ALL OTHER ASSEMBLY ($\pm 0.060"$)

PROPRIETARY NOTE:
 THE DATA AND TECHNIQUES CONTAINED IN THIS DRAWING ARE PROPRIETARY INFORMATION OF VALMONT INDUSTRIES AND CONSIDERED A TRADE SECRET. ANY USE OR DISCLOSURE WITHOUT THE CONSENT OF VALMONT INDUSTRIES IS STRICTLY PROHIBITED.

DESCRIPTION
**8' DOUBLE MONOPOLE
 TRIPLE T-ARM 12"-45"
 W/ 2-3/8" ANTENNA PIPES**

CPD NO. NCS	DRAWN BY CMFL 11/1/2021	ENG. APPROVAL 5/7/2026
CLASS 87	SUB 02	DRAWING USAGE CUSTOMER
	CHECKED BY JET	5/7/2026

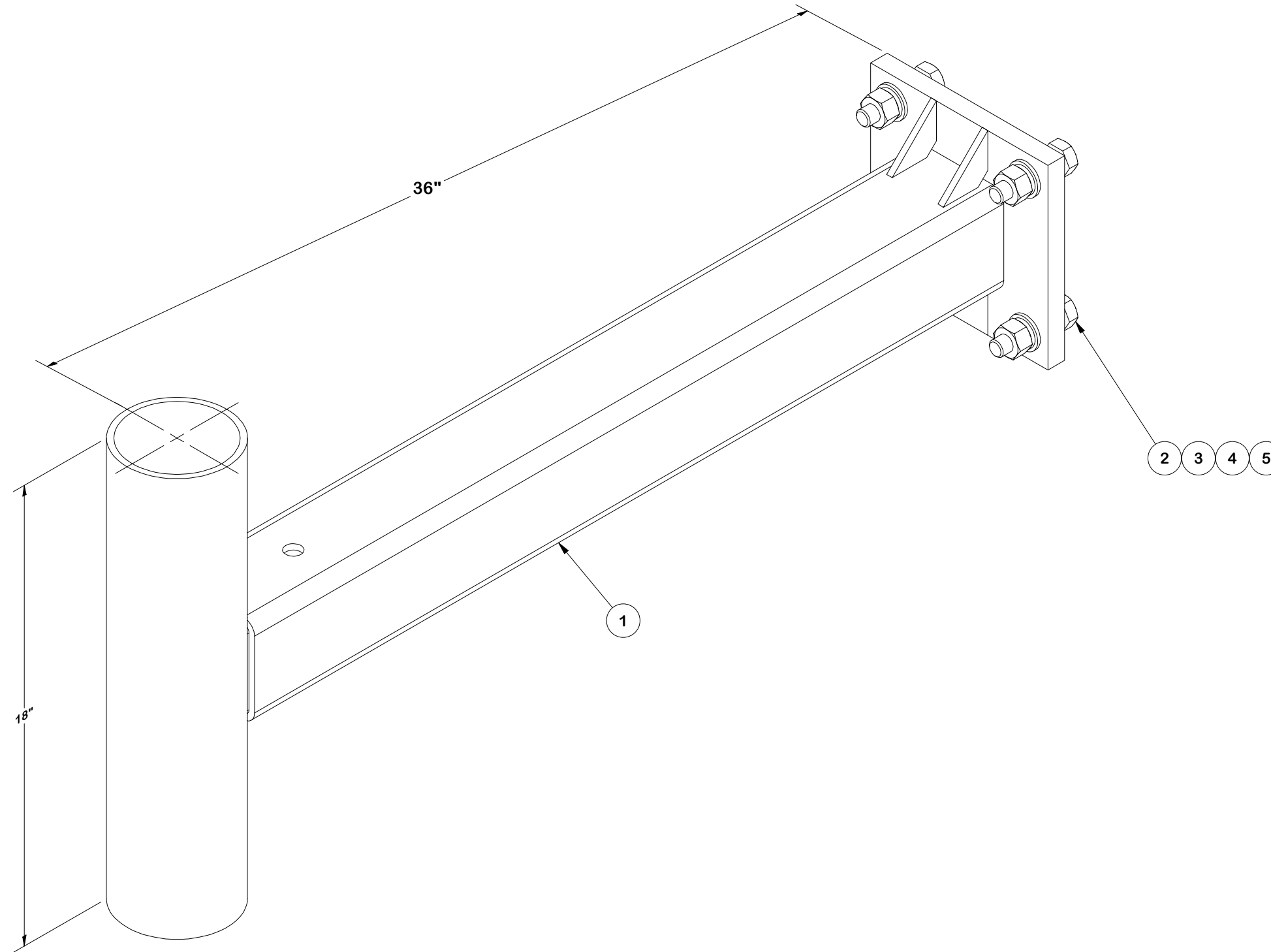


Locations:
 New York, NY
 Atlanta, GA
 Los Angeles, CA
 Plymouth, IN
 Salem, OR
 Dallas, TX

Engineering
 Support Team:
 1-888-753-7446

PART NO. LWRM
DWG. NO. RMVD8-3-296

PARTS LIST					
ITEM	QTY	PART NO.	PART DESCRIPTION	UNIT WT.	NET WT.
1	1	X-SV197-36	SUPPORT ARM WELDMENT - 36"	67.93	67.93
2	4	A58234	5/8" x 2-3/4" HDG A325 HEX BOLT	0.36	1.42
3	4	A58FW	5/8" HDG A325 FLATWASHER	0.03	0.14
4	4	G58LW	5/8" HDG LOCKWASHER	0.03	0.10
5	4	A58NUT	5/8" HDG A325 HEX NUT	0.13	0.52
TOTAL WT. #				70.12	



FINISH:
HOT DIP GALVANIZED.

REV	DESCRIPTION OF REVISIONS	CPD	BY	DATE
B	SUPER ASSEMBLY AND CHANGED PIPE P396 TO P3108	NCS	KS	5/5/2026
A	CHANGED CENTER MOUNT PIPE CONNECTION	N/A	CSL	11/23/2021

REVISION HISTORY

TOLERANCE NOTES

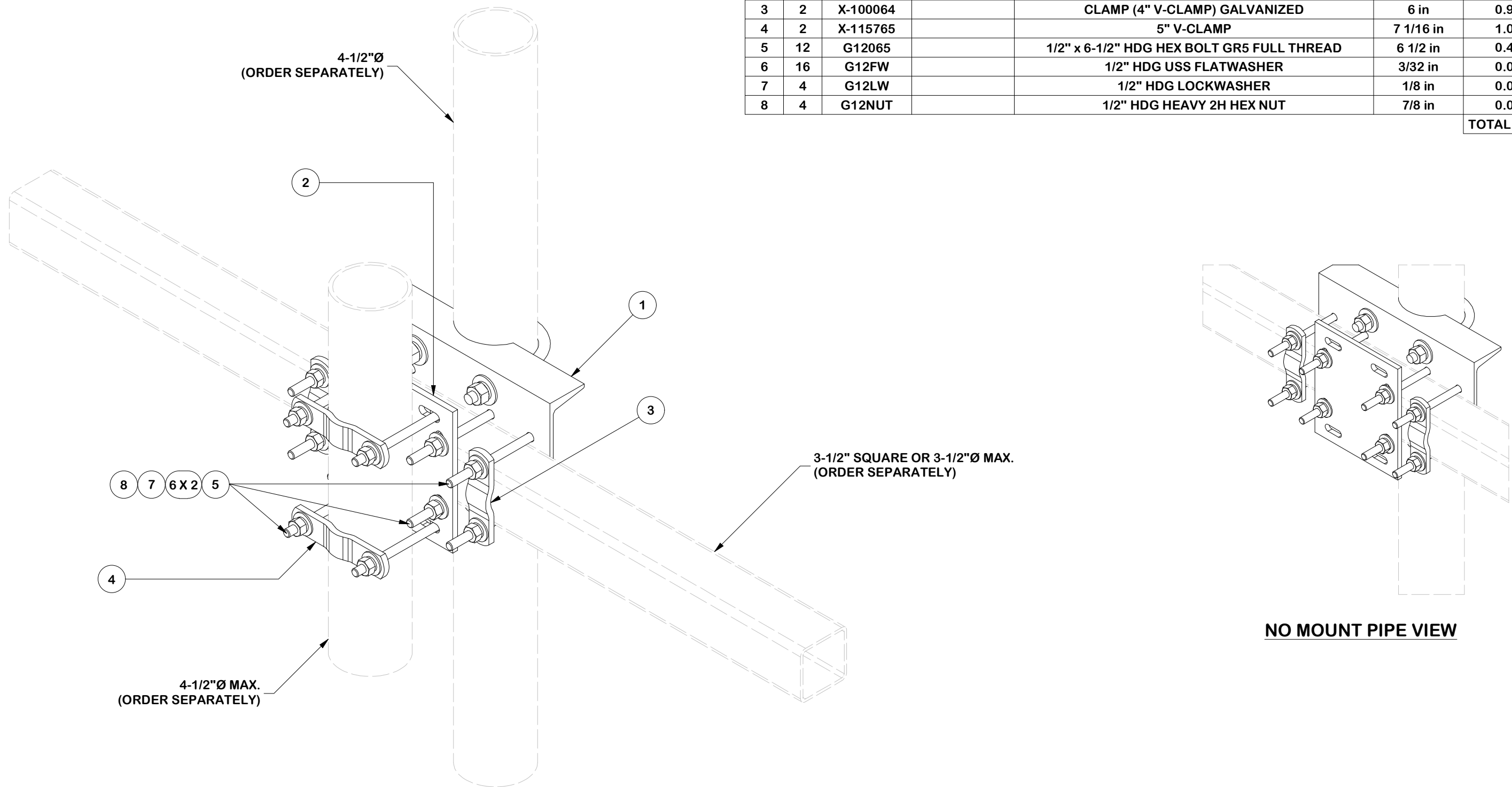
TOLERANCES ON DIMENSIONS, UNLESS OTHERWISE NOTED ARE:
 SAWED, SHEARED AND GAS CUT EDGES ($\pm 0.030"$)
 DRILLED AND GAS CUT HOLES ($\pm 0.030"$) - NO CONING OF HOLES
 LASER CUT EDGES AND HOLES ($\pm 0.010"$) - NO CONING OF HOLES
 BENDS ARE $\pm 1/2$ DEGREE
 ALL OTHER MACHINING ($\pm 0.030"$)
 ALL OTHER ASSEMBLY ($\pm 0.060"$)

PROPRIETARY NOTE:
THE DATA AND TECHNIQUES CONTAINED IN THIS DRAWING ARE PROPRIETARY INFORMATION OF VALMONT INDUSTRIES AND CONSIDERED A TRADE SECRET. ANY USE OR DISCLOSURE WITHOUT THE CONSENT OF VALMONT INDUSTRIES IS STRICTLY PROHIBITED.

DESCRIPTION			
8' DOUBLE MONOPOLE TRIPLE T-ARM 12"-45" W/ 2-3/8" ANTENNA PIPES			
CPD NO.	DRAWN BY	ENG. APPROVAL	
NCS	CMFL 11/1/2021	5/7/2026	
CLASS	SUB	DRAWING USAGE	CHECKED BY
87	02	CUSTOMER	JET 5/7/2026

 A valmont COMPANY	Engineering Support Team: 1-888-753-7446	Locations: New York, NY Atlanta, GA Los Angeles, CA Plymouth, IN Salem, OR Dallas, TX
	PART NO. SV197-36	
DWG. NO. RMVD8-3-296		6 OF 9 PAGE

PARTS LIST							
ITEM	QTY	PART NO.	BOX NO.	PART DESCRIPTION	LENGTH	UNIT WT.	NET WT.
1	1	SP216	P-SP216	LARGE PIPE SUPPORT CROSS PLATE		30.46	30.46
2	1	SCX3		CROSSOVER PLATE	9 1/4 in	7.19	7.19
3	2	X-100064		CLAMP (4" V-CLAMP) GALVANIZED	6 in	0.92	1.84
4	2	X-115765		5" V-CLAMP	7 1/16 in	1.09	2.17
5	12	G12065		1/2" x 6-1/2" HDG HEX BOLT GR5 FULL THREAD	6 1/2 in	0.41	4.91
6	16	G12FW		1/2" HDG USS FLATWASHER	3/32 in	0.03	0.55
7	4	G12LW		1/2" HDG LOCKWASHER	1/8 in	0.01	0.06
8	4	G12NUT		1/2" HDG HEAVY 2H HEX NUT	7/8 in	0.07	0.29
TOTAL WT. #							47.11



FINISH:
HOT DIP GALVANIZED.

TOLERANCE NOTES

TOLERANCES ON DIMENSIONS, UNLESS OTHERWISE NOTED ARE:
 SAWED, SHEARED AND GAS CUT EDGES ($\pm 0.030"$)
 DRILLED AND GAS CUT HOLES ($\pm 0.030"$) - NO CONING OF HOLES
 LASER CUT EDGES AND HOLES ($\pm 0.010"$) - NO CONING OF HOLES
 BENDS ARE $\pm 1/2$ DEGREE
 ALL OTHER MACHINING ($\pm 0.030"$)
 ALL OTHER ASSEMBLY ($\pm 0.060"$)

PROPRIETARY NOTE:
 THE DATA AND TECHNIQUES CONTAINED IN THIS DRAWING ARE PROPRIETARY INFORMATION OF VALMONT INDUSTRIES AND CONSIDERED A TRADE SECRET. ANY USE OR DISCLOSURE WITHOUT THE CONSENT OF VALMONT INDUSTRIES IS STRICTLY PROHIBITED.

DESCRIPTION
**8' DOUBLE MONOPOLE
 TRIPLE T-ARM 12"-45"
 W/ 2-3/8" ANTENNA PIPES**

SITE PRO 1
 A valmont COMPANY

Engineering Support Team:
 1-888-753-7446

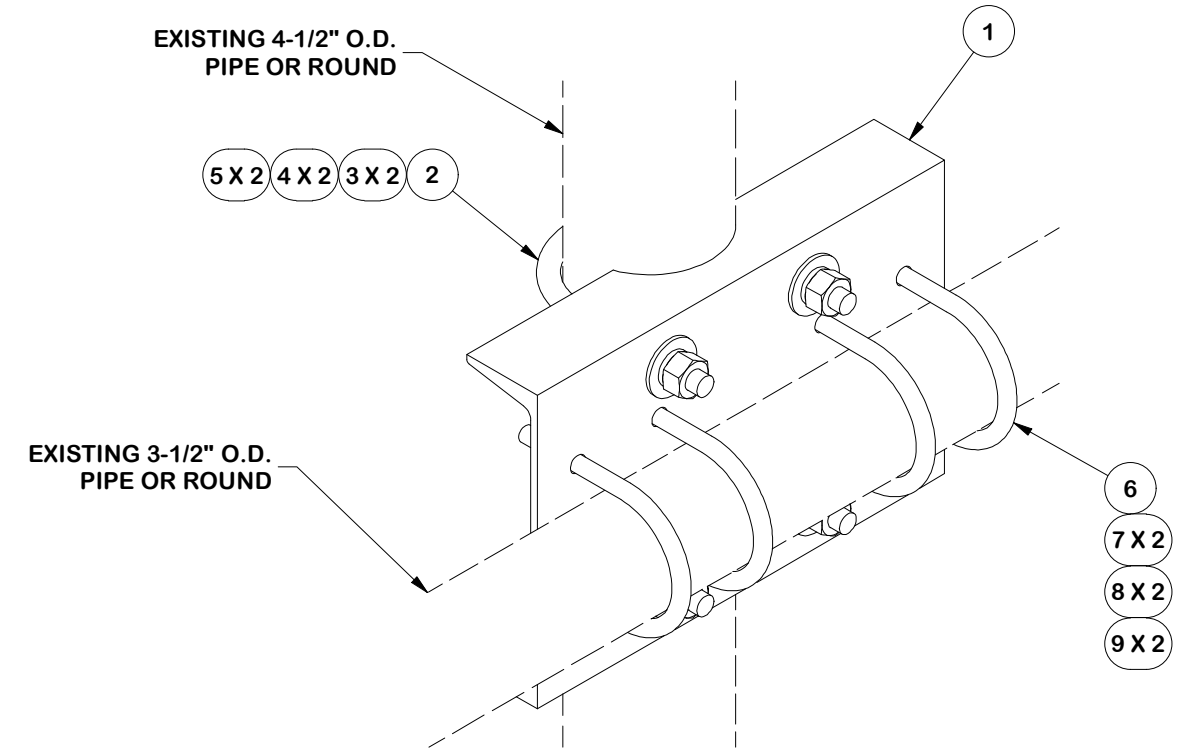
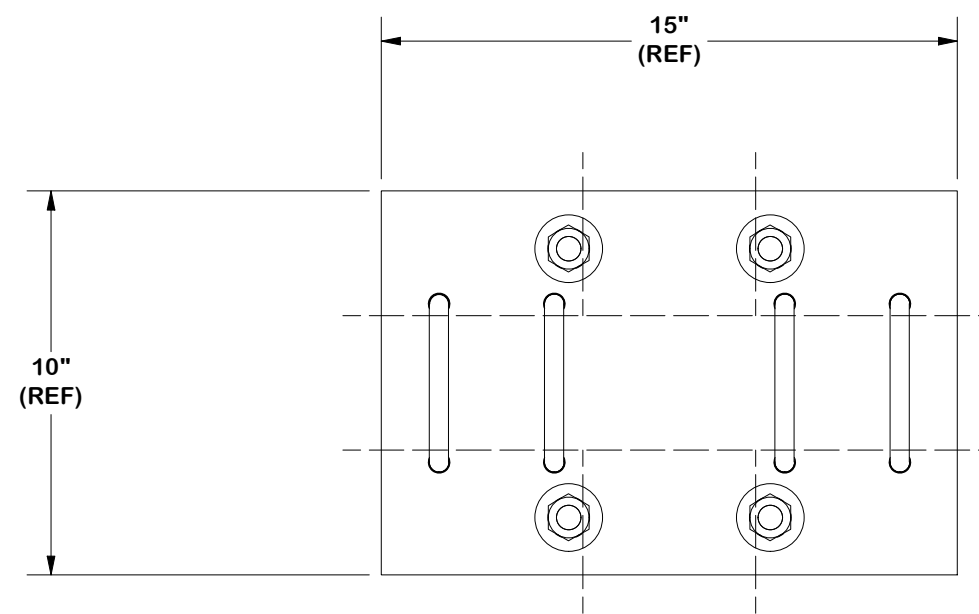
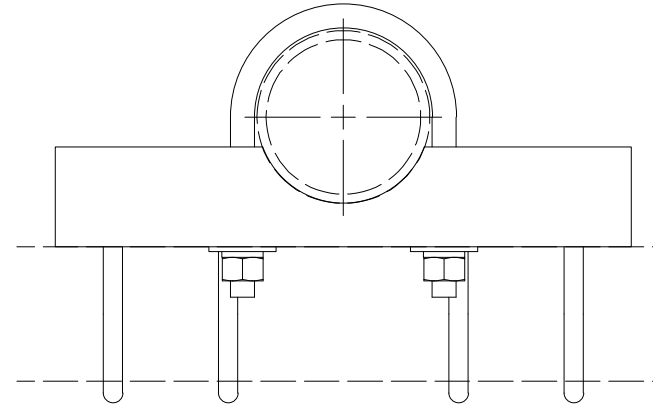
Locations:
 New York, NY
 Atlanta, GA
 Los Angeles, CA
 Plymouth, IN
 Salem, OR
 Dallas, TX

REV	DESCRIPTION OF REVISIONS	CPD	BY	DATE
A	UPDATED TO SUPER	NCS	CSL	12/30/2025
REVISION HISTORY				

CPD NO. NCS	DRAWN BY CMFL 11/1/2021	ENG. APPROVAL 5/7/2026
CLASS 87	SUB 02	DRAWING USAGE CUSTOMER
CHECKED BY JET 5/7/2026		

PART NO. SP216-CK	7 OF 9 PAGE
DWG. NO. RMVD8-3-296	

PARTS LIST						
ITEM	QTY	PART NO.	PART DESCRIPTION	LENGTH	UNIT WT.	NET WT.
1	1	X-SP216	LARGE SUPPORT CROSS PLATE		22.08	22.08
2	2	X-UB5458	5/8 X 4-5/8" X 7" X 3" U-BOLT	7 in	1.63	3.25
3	4	G58FW	5/8" HDG USS FLATWASHER	1/8 in	0.07	0.28
4	4	G58LW	5/8" HDG LOCKWASHER		0.03	0.10
5	4	G58NUT	5/8" HDG HEAVY 2H HEX NUT		0.13	0.52
6	4	X-UB1358	1/2" X 3-5/8" X 5-1/2" X 3" U-BOLT	5 1/2 in	0.82	3.27
7	8	G12FW	1/2" HDG USS FLATWASHER	3/32 in	0.03	0.27
8	8	G12LW	1/2" HDG LOCKWASHER	1/8 in	0.01	0.11
9	8	G12NUT	1/2" HDG HEAVY 2H HEX NUT	7/8 in	0.07	0.57
					TOTAL WT. #	28.84



TOLERANCE NOTES

TOLERANCES ON DIMENSIONS, UNLESS OTHERWISE NOTED ARE:
 SAWED, SHEARED AND GAS CUT EDGES ($\pm 0.030"$)
 DRILLED AND GAS CUT HOLES ($\pm 0.030"$) - NO CONING OF HOLES
 LASER CUT EDGES AND HOLES ($\pm 0.010"$) - NO CONING OF HOLES
 BENDS ARE $\pm 1/2$ DEGREE
 ALL OTHER MACHINING ($\pm 0.030"$)
 ALL OTHER ASSEMBLY ($\pm 0.060"$)

PROPRIETARY NOTE:
 THE DATA AND TECHNIQUES CONTAINED IN THIS DRAWING ARE PROPRIETARY INFORMATION OF VALMONT INDUSTRIES AND CONSIDERED A TRADE SECRET. ANY USE OR DISCLOSURE WITHOUT THE CONSENT OF VALMONT INDUSTRIES IS STRICTLY PROHIBITED.

DESCRIPTION
**8' DOUBLE MONOPOLE
 TRIPLE T-ARM 12"-45"
 W/ 2-3/8" ANTENNA PIPES**

SITE PRO 1
 A valmont COMPANY

Engineering Support Team:
 1-888-753-7446

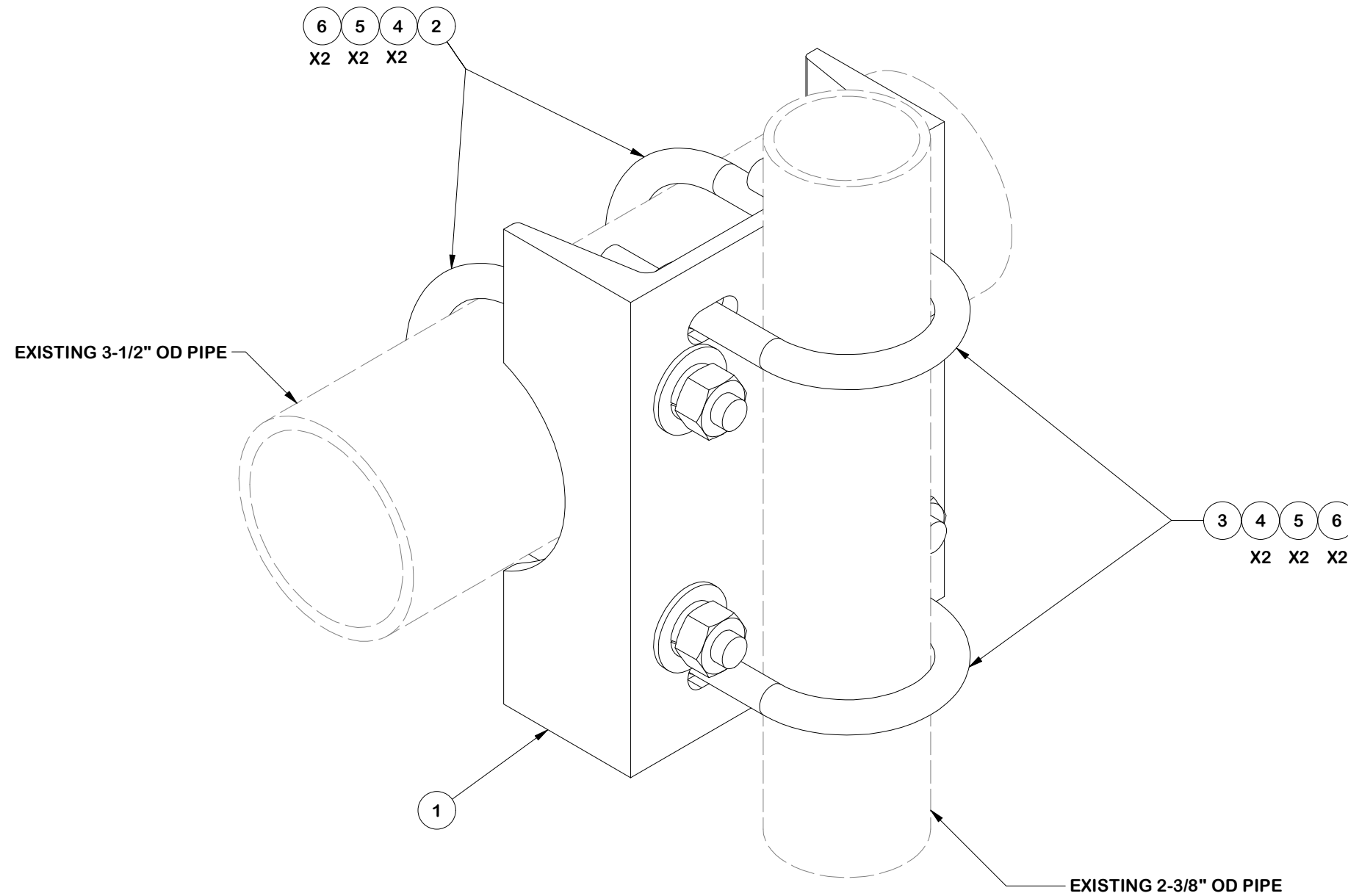
Locations:
 New York, NY
 Atlanta, GA
 Los Angeles, CA
 Plymouth, IN
 Salem, OR
 Dallas, TX

REV	DESCRIPTION OF REVISIONS	CPD	BY	DATE
A	REDRAWN IN INV, UPDATED VIEWS & TABLE	SP1	KC8	8/17/2012
REVISION HISTORY				

CPD NO. NCS	DRAWN BY CMFL 11/1/2021	ENG. APPROVAL 5/7/2026
CLASS 87	SUB 02	DRAWING USAGE CUSTOMER
CHECKED BY JET 5/7/2026		

PART NO. SP216	DWG. NO. RMVD8-3-296

PARTS LIST						
ITEM	QTY	PART NO.	PART DESCRIPTION	LENGTH	UNIT WT.	NET WT.
1	1	X-SP219	SMALL SUPPORT CROSS PLATE	8 1/4 in	8.61	8.61
2	2	X-UB1306	1/2" X 3-5/8" X 6" X 3" U-BOLT (HDG.)		0.83	1.66
3	2	X-UB1212	1/2" X 2-1/2" X 4-1/2" X 2" U-BOLT	4 1/2 in	0.66	1.32
4	8	G12FW	1/2" HDG USS FLATWASHER	3/32 in	0.03	0.27
5	8	G12LW	1/2" HDG LOCKWASHER	1/8 in	0.01	0.11
6	8	G12NUT	1/2" HDG HEAVY 2H HEX NUT	7/8 in	0.07	0.57
					TOTAL WT. #	12.47



FINISH:
HOT DIP GALVANIZED.

TOLERANCE NOTES

TOLERANCES ON DIMENSIONS, UNLESS OTHERWISE NOTED ARE:
 SAWED, SHEARED AND GAS CUT EDGES ($\pm 0.030"$)
 DRILLED AND GAS CUT HOLES ($\pm 0.030"$) - NO CONING OF HOLES
 LASER CUT EDGES AND HOLES ($\pm 0.010"$) - NO CONING OF HOLES
 BENDS ARE $\pm 1/2$ DEGREE
 ALL OTHER MACHINING ($\pm 0.030"$)
 ALL OTHER ASSEMBLY ($\pm 0.060"$)

PROPRIETARY NOTE:
 THE DATA AND TECHNIQUES CONTAINED IN THIS DRAWING ARE PROPRIETARY INFORMATION OF VALMONT INDUSTRIES AND CONSIDERED A TRADE SECRET. ANY USE OR DISCLOSURE WITHOUT THE CONSENT OF VALMONT INDUSTRIES IS STRICTLY PROHIBITED.

DESCRIPTION
**8' DOUBLE MONOPOLE
 TRIPLE T-ARM 12"-45"
 W/ 2-3/8" ANTENNA PIPES**

CPD NO. NCS	DRAWN BY CMFL 11/1/2021	ENG. APPROVAL 5/7/2026
CLASS 87	SUB 02	DRAWING USAGE CUSTOMER
CHECKED BY JET 5/7/2026		

SITE PRO 1
 A valmont COMPANY

Engineering Support Team:
 1-888-753-7446

Locations:
 New York, NY
 Atlanta, GA
 Los Angeles, CA
 Plymouth, IN
 Salem, OR
 Dallas, TX

PART NO. SP219	PAGE 9 OF 9
DWG. NO. RMVD8-3-296	